

RETAINING ANGLE FOR FIRE DAMPERS

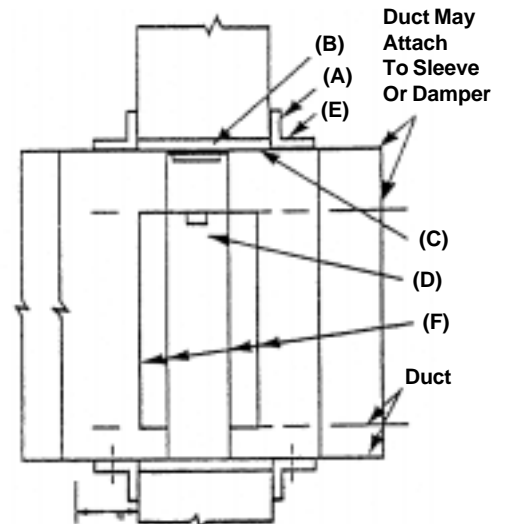
- 1-1/2 X 1-1/2 X 16 ga & 1-1/2 x 1-1/2 x 14 ga cold formed galvanized angle
- Pre-punched 7/32 holes for faster fastening of angle to sleeve
- 20 foot lengths minimize scrap (25 lengths per bundle)
- SMACNA E class rigidity (may be used for duct reinforcement)
- In stock at your Ductmate distributor
- Other angle sizes and materials available (consult your distributor)



**MEETS
ASHRAE,
SMACNA
and UMC
STANDARDS**

Typical Installation Details

- | | |
|--|--|
| <p>(A) Retaining Angles:
Minimum 1 1/2 x 1 1/2 x 0/058 (16 ga.) Retaining angles must lap structural opening 1" minimum and cover corners of openings.</p> <p>(B) Clearance: 1/8" Per Linear Foot Both Dimensions.</p> <p>(C) Steel Sleeve</p> <p>(D) Approved Fire Damper (curtain or blade type)</p> | <p>(E) Secure Retaining Angle to Sleeve Only on 8" Centers With:</p> <ol style="list-style-type: none"> 1. 1/2 long welds or 2. 1/4 Bolts and Nuts, or 3. No. 10 screws, or 4. Minimum 3/16 Steel Rivets <p>(F) Secure Damper To Sleeve On 8" Centers With:</p> <ol style="list-style-type: none"> 1. 1/2 long welds, or 2. 1/4 Bolts and Nuts, or 3. No. 10 Steel Screws, or 4. Minimum 1/16 Steel Rivets |
|--|--|



PACKAGING:

PART NUMBER	DESCRIPTION	WEIGHT	LENGTH/BUNDLE
AI2.812GA16	1-1/2" X 1-1/2" X 16 GA	.62 LBS/FT	20' pcs/500' bdl
AI2.812GA14	1-1/2" X 1-1/2" X 14 GA	.73 LBS/FT	20' pcs/500' bdl