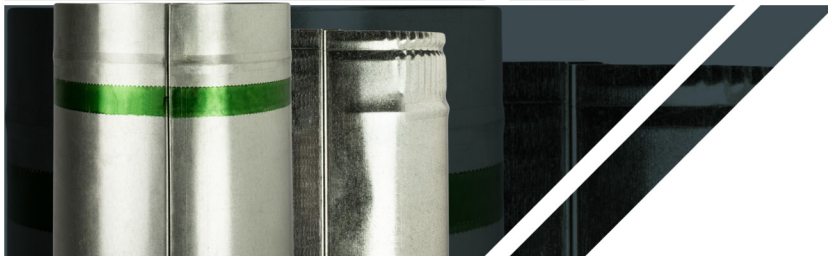
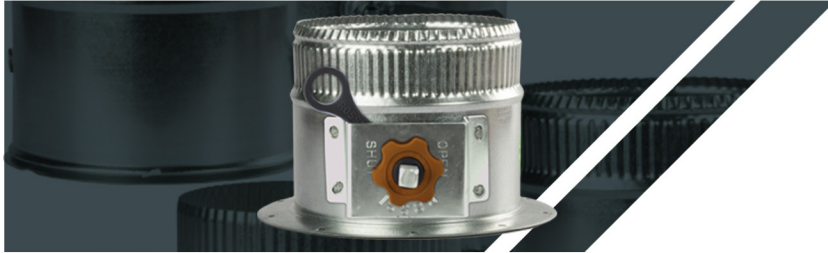


## Factory Sealed Pipe and Fittings



### Rossi Damper Hardware

This handle allows for fully hand operational air flow balancing to be done on site without the need for any tools. Made from a specially designed engineering polymer with an increased surface area resulting in the strongest friction lock on the market. The bright orange knobs make the damper handles easy to spot on site. The handle makes air balancing a breeze. It is available in 1.5" and 2" for standoff applications. All GSI Dampered Fittings are available with Rossi Hardware.

### Hetos

Available in three styles, a variety of alloy types, and with or without dampers. All HETOs are supplied with a 1/8" thick high density polyethylene gasket. Crimped ends are standard, but plain ends are an available option.

### Conicals

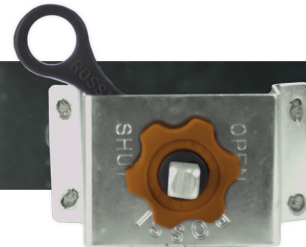
Conicals are available in two styles in a variety of metals with an optional scoop, and damper and stand-off hardware. Crimped ends are standard, but plain ends are an available option. Press-On Conicals are supplied with a 1/8" thick high density polyethylene gasket.

### Collars

Three styles are available in a variety of metals. All Collars come standard with crimped ends with plain ends available. All Press-On Collars are supplied with a 1/8" thick high density polyethylene gasket. Six inch long Collars are available with or without dampers and stand-off hardware. All Collars without tabs are available with an optional scoop.

### GreenSeam Plus Pipe

GreenSeam Plus Pipe incorporates a factory applied gasket in both the longitudinal and transverse joint. This unique design creates a SMACNA Class 3 seal without the use of additional sealants or tape. The factory sealed pipe is available in 24" or 60" lengths and diameters from 4" to 14". Galvanized metal is standard, but Aluminum, 304 Stainless Steel, and G90 Galvanized Coating are also available.



#### BIRMINGHAM

700 Republic Street  
Birmingham, AL 35214  
Toll: (888) 757-4242  
Tel: (205) 324-4242  
Fax: (205) 324-9292

#### MOBILE

5237 Halls Mill Rd. Bldg I  
Mobile, AL 36619  
Toll: (866) 518-5568  
Tel: (251) 706-2970  
Fax: (251) 706-2974

#### GREENVILLE

200 Brozzini Court  
Greenville, SC 29615  
Toll: (800) 521-9795  
Tel: (864) 269-8320  
Fax: (864) 269-8321

#### NASHVILLE

1150 Antioch Pike, Ste 400  
Nashville, TN 37211  
Toll: (855) 331-6371  
Tel: (615) 331-6371  
Fax: (615) 331-6431

#### ATLANTA

236 Moore Street,  
SE Atlanta, GA 30312  
Toll: (800) 282-7386  
Tel: (404) 688-4510  
Fax: (404) 522-7439

#### NORCROSS

200 Piedmont Court Ste., D  
Doraville, GA 30340  
Tel: (678) 539-5600

#### JACKSON

2900 Benton H Green Blvd.  
Richland, MS 39218  
Toll: (866) 263-2133  
Tel: (601) 933-0402  
Fax: (601) 933-0426

#### NEW ORLEANS

300 Jefferson Hwy Bldg 8  
Jefferson, LA 70121  
Toll: (866) 423-1118  
Tel: (504) 832-1276  
Fax: (504) 832-1976

#### MEMPHIS

4083 East Raines Road  
Memphis, TN 38118  
Toll: (888) 376-1008  
Tel: (901) 794-1008  
Fax: (901) 794-1068

#### ORLANDO

1168 East 30th Street  
Sanford, FL 32773  
Toll: (877) 874-0900  
Tel: (407) 688-0900  
Fax: (407) 688-0980