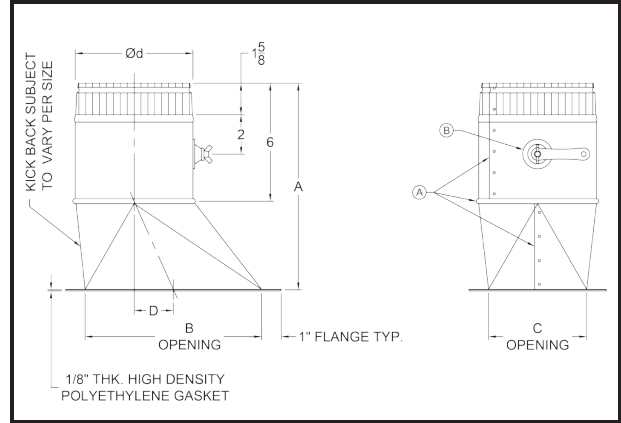


# Tapered High Efficiency Takeoff



## Technical Data

- GSI HETOs are designed and tested to surpass SMACNA Class 3 Leakage Standards.\*
  - Pre-sealed with gasket made of EPDM rubber and proprietary co-polymer
  - Zero VOCs
  - Galvanized Steel (ASTM A653 and A924)
  - G-60 Galvanized Coating (ASTM A653 and ASTM A90)
  - Available in Specialty Metals:
    - G-90 Galvanized Steel
    - Aluminum (ASTM B209 Alloy 3003 Temper H14)
    - 304 Stainless Steel (ASTM A480 2B Finish)
  - Dimensional Tolerance:  $\pm 1/4"$
- A. HETOs now come standard with sealed joints! The riveted seam on the collar and boot, as well as the co-latch seam between the collar and boot are sealed with the GreenSeam integral gasket. Unsealed fittings are available upon request.
- B. Non-dampered HETOs are supplied with a 3/8" knock-out. Dampered HETOs are supplied with 24GA. damper blades and GSI's proprietary low-leakage hardware. See Appendix A.

## Product Availability

Size (Ød)	Gauge Availability		Quantity		Dimension			
	26 Ga.	24 Ga.	Layer	Skid	A	B	C	D
4"	Yes	-	35	210	10 1/2"	7"	4"	1 1/2"
5"	Yes	Yes	30	180	10 1/2"	9"	5"	2 1/2"
6"	Yes	Yes	30	180	10 1/2"	9"	5"	2"
7"	Yes	Yes	18	120	10 1/2"	11"	5"	2 1/2"
8"	Yes	Yes	20	120	11 1/2"	12"	6"	2 1/2"
9"	Yes	Yes	12	72	11 1/2"	13"	7"	2 1/2"
10"	Yes	Yes	12	72	11 1/2"	14"	8"	2 1/2"
12"	Yes	Yes	9	54	11 1/2"	16"	10"	3"
14"	Yes	Yes	6	36	12"	18"	12"	3"
16"	Yes	Yes	4	24	13"	20"	14"	3"
18"	Yes	Yes	4	24	13"	22"	16"	3"
20"	Yes	Yes	4	24	13"	24"	18"	3"

Dampered fittings are available with 1 1/2" or 2" Stand-Off. See Appendix C on page 28.

## Part Number Schematic

Example: HTS1510GA26D38 = Tapered HETO for 10" Pipe in 26Ga. Galvanized Steel, with a Solid Rod Damper and 1 1/2" Stand-Off

<b>HT</b> Tapered High Efficiency Take-Off	<b>S15</b> Stand-Off S15 - 1 1/2" S2 - 2"  (Opt. on Dampers Only)	<b>10</b> Tapered HETO Diameter (Ød)	<b>GA</b> Material GA-Galvanized (Std.)  AL - Aluminum S4 - 304 S.S	<b>26</b> Gauge GA - 26, 24  AL - 32 S4 - 26	<b>D</b> Damper (Opt.)	<b>C</b> Wingate hardware  <b>38</b> 3/8" Solid Rod  (Opt. on Dampers Only)  See Appendix A on page 26.
---	--	---	--	---	---------------------------	---

Items in green denote available options  
 Check with your sales representative for availability of any size, gauge, or specialty metal item not shown here.  
 \* Test performed on standard fittings without dampers.