

PBreeze Silver Jacket Insulated



Jon Bell
P 561-248-2479

Jeff Bell
P 561-267-1339
F 561-537-2513

Polar Air Supply LLC
6461 Garden Road #130
Riviera Beach, Florida 33404
polarairsupply@yahoo.com
www.polarairsupply.com

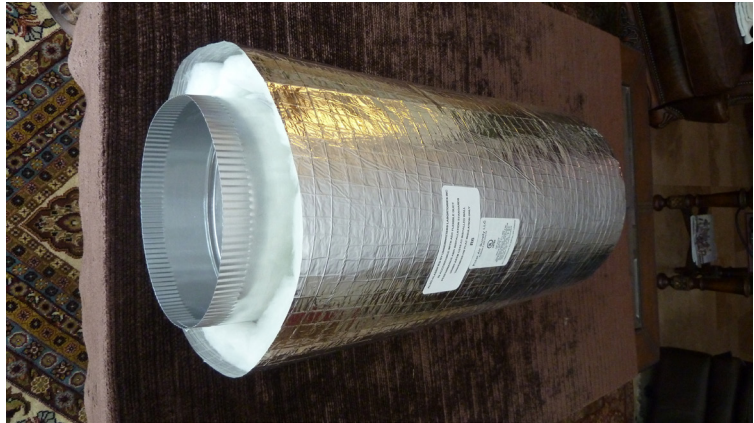
UL 181 Metal Duct
and Fittings

Listed and Labeled Insulated
Class 1 UL 181 Air Duct
The bend and stay duct

Product Submittal & Data

Physical Description

PBreeze is manufactured in 8Ft.lengths with an aluminum coupling provided. The duct should be considered for the better home for those that can see the benefits of the superior product. It is very durable and can be cleaned many times. It is the perfect solution for fresh air make up. Also consider our new Copper product.



Product Data

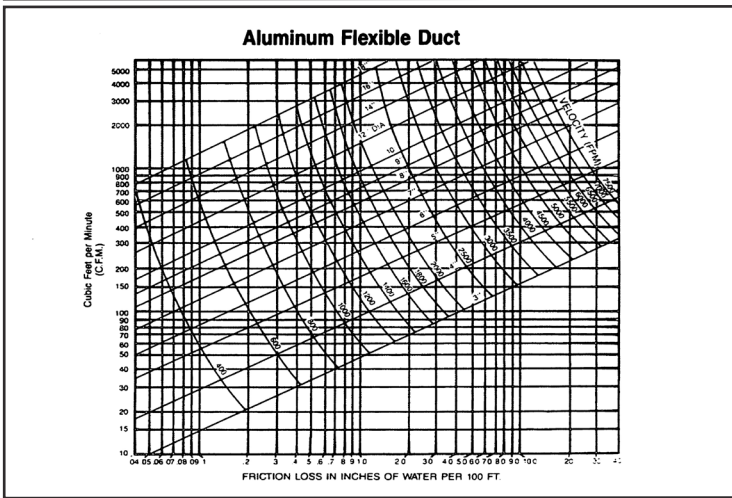
Diameters available 4",5",6",7"8",9",10",12",14",16",18",20'. The product is delivered at its full manufactured length of 8 feet. We do not compress our product when we ship it.

Performance Data

Maximum Positive and Negative Pressures. Sizes 4" to 10" Dia. 12" W.C. Sizes 12' TO 20" 8" W.C. Maximum. Velocity 5000 FPM . OperatingTemp -100F to +250

Flame spread less than 25 and Smoke Developed of considerable less than 50. Meets the requirements of numerous city and government standards.

Thermal Value: The duct is tested to R6 and bears the UL adjunct marking linking it to the ADC Thermal Certification Mark. The duct is described in UL File MH29962. Meets UL 181 Class 1 Requirements.



Polar policy is one of continual product improvement in design and mfg wherever possible. Therefore all specifications & designs are subject to change. without incurring obligations.

Suggested Specifications. Bendable ducts shall be constructed of all metal. The duct should be listed and labeled by Underwriters Laboratories and meet the guidelines of UL181. Bend and stay metal ducts shall be used to connect supply ducts with air distribution registers. Ducts should be as manufactured by Polar Air.

CUFlex Silver Jacket Insulated



Jon Bell
 P 561-248-2479
Jeff Bell
 P 561-267-1339
 F 561-537-2513
 Polar Air Supply LLC
 6461 Garden Road #130
 Riviera Beach, Florida 33404
 polarairsupply@yahoo.com
 www.polarairsupply.com

Flexible Metal Duct and Fittings

UL Listed and Labeled Insulated Class 1 Flexible Copper Air Duct.

EPA #090728
 Patent Pending
Copper

Product Submittal & Data Physical Description

CuFlex is manufactured in 8 Ft lengths. It is supplied with or without an attached coupling. Much has been written about the properties of copper. HVAC Anti-microbial Copper Alloy Surface Material on the of the CUFlex duct inhibits the growth of bacteria, mold and mildew that cause odor or compromis-es its effective function. This product is perfect for schools, hospitals and nursing homes. The duct is also good for makeup air where warm and humid air are being brought into the building. Diameters available 6",7",8",9",10",12",14",16",18",20'. The product is delivered at its full manufactured length of 8 feet. We do not compress our product when we ship it.



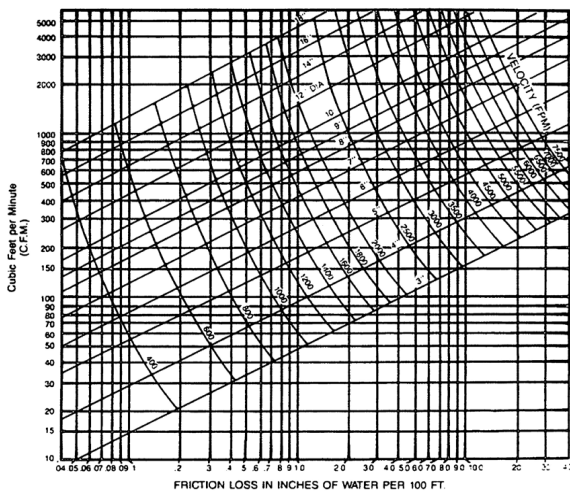
Performance Data

Maximum Positive and Negative Pressures.Sizes 6" to 10" Dia. 12" W.C. Sizes 12' TO 20" 8" W.C. Maximum. Velocity 5000 FPM . OperatingTemp -100F to +250

Flame spread less than 25 and Smoke Developed of consederable less than 50. Meets the requirements of numerous city and government standards.

Thermal Value: The duct is tested to R6 and bears the UL adjunct marking linking it to the ADC Thermal Certification Mark. The duct is described in UL File MH29962. Meets UL 181 Class 1 Requirements.

Aluminum Flexible Duct



Polar policy is one of continual product improvement in design and mfg wherever possible. Therefore all specifications & designs are subject to change. without incurring obligations.

Suggested Specifications. Bend and stay ducts shall be constructed of all metal. The duct should be listed and labeled by Underwriters Laboratories and meet the guidelines of UL181. Bend and stay ducts shall be used to connect supply ducts with air distribution outlets. Ducts should be as manufactured by Polar Air Supply.

EZFLEX Full Length UL Uninsulated



Polar Air Supply
Metal Duct and Fittings

Jon Bell
P 561-248-2479

Jeff Bell
P 561-267-1339

F 561-537-2513

Polar Air Supply LLC
6461 Garden Road #130
Riviera Beach, Florida 33404

polarairsupply@yahoo.com
www.polarairsupply.com

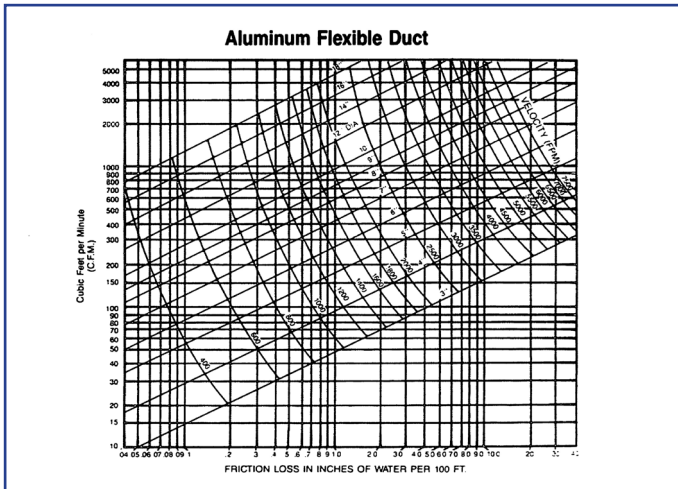
Product Submittal & Data

Physical Description

EZFLEX is manufactured in 8 feet lengths with one end crimped. The crimped end is reinforced and readily accepts screws. The product is to be installed in accordance with the ADC Council. The ADC instructions can be downloaded on our website. The product comes in all the sizes below. It is used primarily for venting.

Product Data

Diameter 4", 5", 6", 7", 8", 9", 10", 12", 14", 16", 18", 20". The product is delivered in 2' x 2' x 8 feet boxes. The product is delivered at its full manufactured length.



Performance Data

Maximum Positive and Negative
Sizes 4" to 10" Dia. 12"W.C.
Sizes 12" to 20" Dia. 8" W.C.
Maximum Velocity 5,000 FPM

Operating Temp -100F to +430F
Flame spread 0 and smoke developed of 0 meets the requirements of city and government standards.

Suggested Specifications. Flexible metal ducts shall be constructed of all metal. Duct should be light in weight, self supporting and hand bendable. Bend and stay metal duct shall be listed and labeled by Underwriters laboratories and meet the guidelines of UL 181. Bend and stay metal ducts shall be used to connect supply ducts with air distribution outlets. Ducts should be as manufactured by Polar Air Supply.

The duct is described in UL File Mh29962 and meets UL 181 Class 0 requirements. Product is labeled.

Polar policy is one of continual product improvement in design and mfg where ever possible. Therefore all specifications & designs are subject to change without incurring obligations

ADC Guidelines

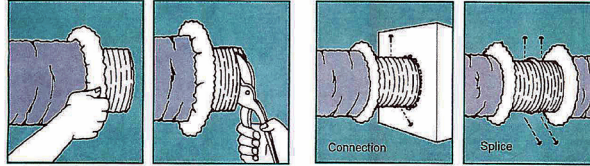
Installation Guidelines . . . continued

4.7 Installation Instruction for Air Ducts and Air Connectors - Metallic with Plain Ends

Connections and Splices

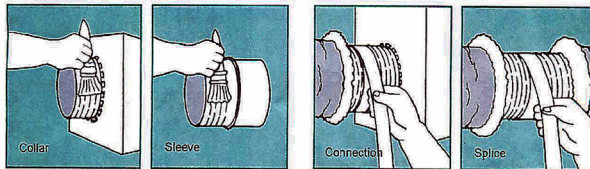
1. After cutting duct to desired length, fold back jacket and insulation exposing core. Trim core ends squarely using suitable metal shears. Determine optional sealing method (Steps 2 or 5) before proceeding.

4. Secure to collar/sleeve using #8 sheet metal screws spaced equally around circumference. Use 3 screws for diameters under 12" [300 mm] and 5 screws for diameters 12" [300 mm] and over.



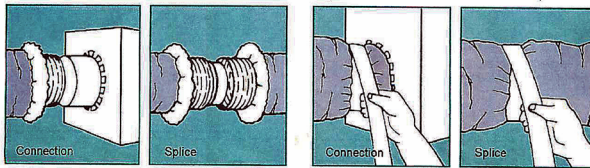
2. When mastics are required and for pressures 4" w.g. [1000 Pa] and over, seal joint with mastic applied uniformly to the outside surface of collar/sleeve. (Disregard this step when not using mastics and proceed to Step 3).

5. For pressures under 4" w.g. [1000 Pa] seal joint using 2 wraps of duct tape applied over screw heads and spirally lapping tape to collar/sleeve. (Disregard this step when using mastics per Step 2).



3. Slide at least 1" [25 mm] of core over metal collar for attaching duct to take off or over ends of a 4" [100 mm] metal sleeve for splicing 2 lengths of duct.

6. Pull jacket and insulation back over core. Tape jacket with 2 wraps of duct tape. A clamp may be used in place of or in combination with the duct tape.



NOTES:

1. For uninsulated air ducts and air connectors, disregard references to insulation and jacket.
2. Use mastics listed and labeled to Standard UL 181B and marked "181B-M" on container.
3. Use tapes listed and labeled to Standard UL 181B and marked "181B-FX".
4. Nonmetallic clamps shall be listed and labeled in accordance with Standard UL 181B and marked "181B-C".



Jon Bell
P 561-248-2479

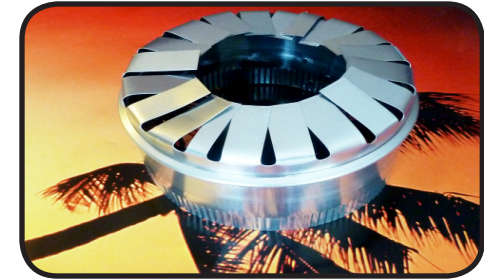
Jeff Bell
P 561-267-1339

F 561-537-2513

Polar Air Supply LLC
6461 Garden Road #130
Riviera Beach, Florida 33404

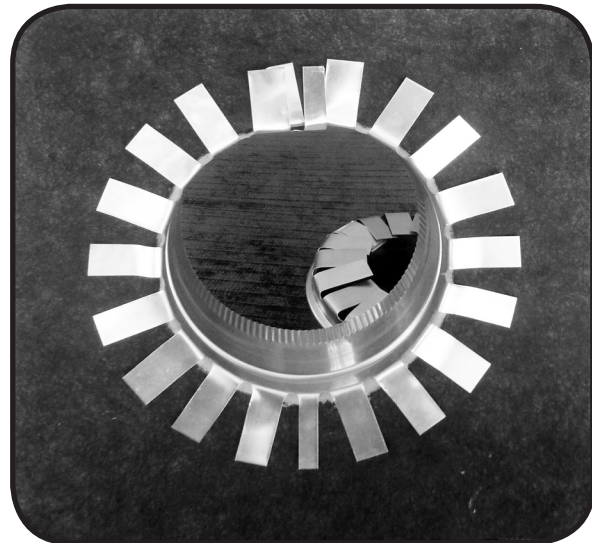
polarairsupply@yahoo.com
www.polarairsupply.com

Flexible Metal Duct
and Fittings



Collars and sleeves are available in all popular sizes.

Note that Collar is show with the tabs bend down to facilitate shipping.



Collars make a good tight seal . Install in accordance with ADC guidelines.



Inquire about our other products.

Flexible Aluminum Duct both insulated, uninsulated and compressed .

Dampers featuring lock in place handles.

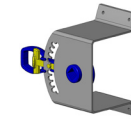


Collars and Sleeves can be shipped right in your insulated R6 UL listed duct if you specify.

This duct is a great solution for the fresh air makeup. Also great for the Dulux home builder.



Top Quality dampers at a low price.



The positive Locking mechanism ensures that balanced air flow stays that way for good. It is available in 1.5 and 2.0 standoff applications.

Locking mechanism is fully operational so that there are no tools needed to adjust or readjust the damper blade on site.. Simply press the thumb trigger and slide the handle into the desired position.

Type EV eve venting

Jon Bell P 561-248-2479
Jeff Bell P 561-267-1339
Fax 561-537-2513

Email Jon@polarairsupply.com Email Jeff@polarairsupply.com



Polar Air Supply LLC
6461 Garden Road
Riviera Beach, Florida 33404

EPA #090728



Patent Pending

www.polarairsupply.com

www.copperduct.com

We have insulated and noninsulated Aluminum as well as copper lined duct.

The bend and stay duct

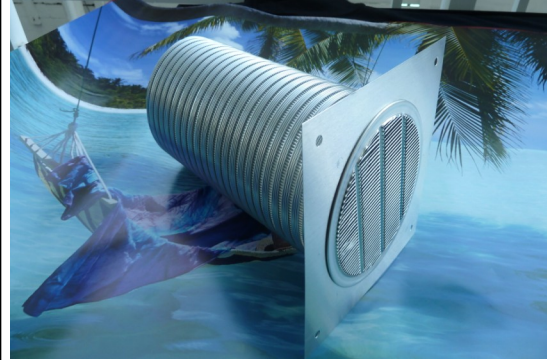
Unsuolated Class 0

UL 181 Air Duct Attached

Product Submittal & Data

Physical Description

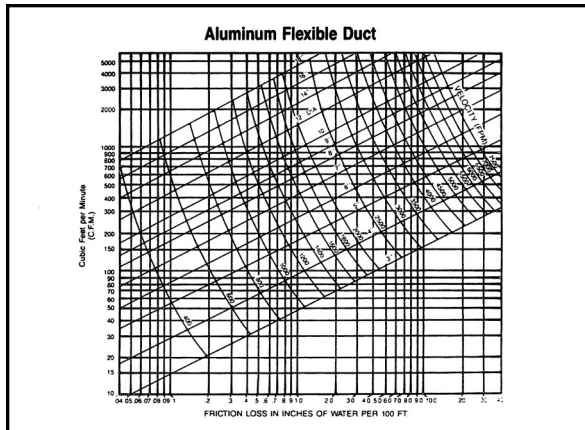
This is an alternative to piercing the roof thus providing cleaner looking lines to the home. The openings are of a size to prevent the intrusion of bugs.



Product Data

Product in available in 3" and 4" sizes. This includes 6 feet of UL listed duct which is attached in a compressed configuration.

Download of Air Chart



Performance Data.

Maximum Positive and Negative Pressures:

Sizes 4" to 10" Dia. 12" W.C.

Sizes 12" to 20" Dia 8" W.C.

Maximum Velocity 5,000 FPM

Operating Temp -100F to +430F

Flame spread 0 and Smoke detected of 0

Meets the requirements of numerous city and government standards.

The duct which is attached to the vent cap is described in UL File MH29962. meets UL 181 Class 0 requirements.

Full Length UL Uninsulated

Jon Bell P 561-248-2479
Jeff Bell P 561-267-1339

Fax 561-537-2513

Email Jon@polarairsupply.com Email Jeff@polarairsupply.com



Polar Air Supply LLC
6481 Garden Road
Riviera Beach, Florida 33404

Flexible Metal Duct
and Fittings

EPA #090728

www.polarairsupply.com

www.copperduct.com

We have insulated and noninsulated
Aluminum as well as copper lined duct.

The bend and stay duct



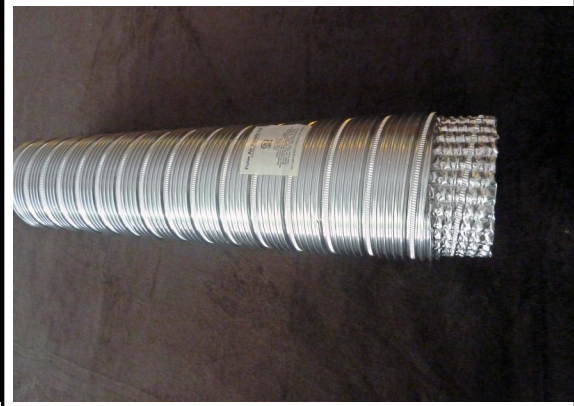
Patent Pending

Uninsulated Class 0 UL 181 Air Duct

Product Submittal & Data

Physical Description

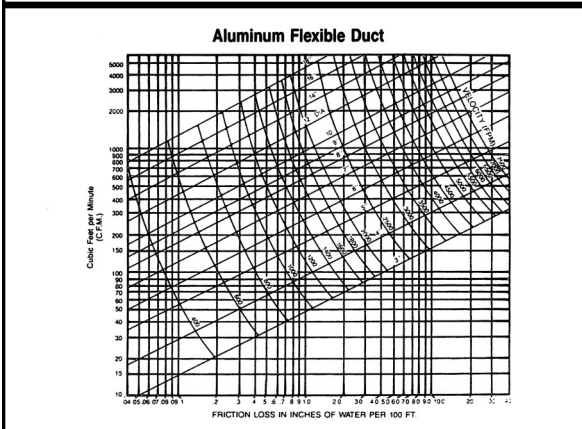
EZFLEX is manufactured in 8 feet lengths with one end crimped. The crimped end is reinforced and readily accepts screws. The Product is to be in-installed in accordance with ADC Council.. Click [here](#) for download of ADC installation requirement. This product which comes in all the sizes below is primarily use for venting purposes.



Product Data

Diameter 4',5",6",7",8",9",10",12",14",16",18",20".
Product is delivered in 2' x 2' x 8 feet boxes. The product is delivered at its full manufactured length of 8 feet.

Download of Air Chart



Suggested Specification.. Bend and stay metal ducts shall be constructed of all metal. Duct should be light in weight, self supporting and hand bendable. Bend and stay metal duct shall be listed and labeled by Underwriters Laboratories and meet the guidelines of UL 181. Bend and stay metal ducts shall be used to connect supply ducts with air distribution outlets. Ducts should be as manufactured by **Polar Air Supply.**

Performance Data.

Maximum Positive and Negative Pressures:

Sizes 4"to10" Dia. 12"W.C.

Sizes 12" to 20"Dia 8"W.C.

Maximum Velocity 5,000 FPM

Operating Temp -100F to +430F
Flame spread 0 and Smoke detected of 0
Meets the requirements of numerous city and government standards.

The duct is described in UL File MH29962. meets UL 181 Class 0 requirements.

Polar policy is one of continual product improvement in design and mfg wherever possible . Therefore all specifications & designs are subject to change without incurring obligations.