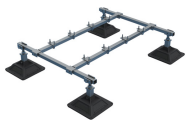


CADDY PYRAMID Equipment Supports



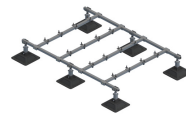
The CADDY PYRAMID Equipment Support is a fast, flexible and innovative system for supporting heavy-duty mechanical services on rooftop surfaces. Superior load distribution and a low abrasion foam interface combine to ensure that the roof membrane is protected despite varying roof surfaces and shifting caused by expansion and contraction.

- Supports chillers, air conditioners and other mechanical systems
- Innovative base design evenly distributes load to help prevent damage to roof membrane
- Innovative crossbar and equipment-support clamps enable quick assembly
- Supports green building requirements; thermoplastic bases are made from recycled material and can contribute to earning LEED credits



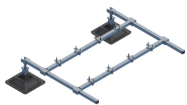
CADDY PYRAMID Equipment Support Kit, 4 Post Base

Includes all post bases, hardware and framing needed for an out of the box solution to construct a 1 m equipment support.



CADDY PYRAMID Equipment Support Kit, 6 Post Base

Includes all post bases, hardware and framing needed for an out of the box solution to construct a 2 m equipment support.



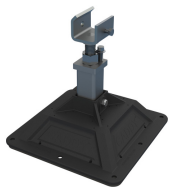
CADDY PYRAMID Equipment Support Frame Extension Kit

Add to any 1 m or 2 m equipment support kit to extend the size of the frame in 1 m increments to create custom sizes and configurations.



CADDY PYRAMID Equipment Support Height Extension

Height extension used to lift the frame up to 31 1/2" (800 mm) off the roof surface.



CADDY PYRAMID Equipment Support Post Base

Individual post base with height adjustable leg 12" to 18" (305 to 457 mm) gives you the flexibility to create your own equipment support with strut.



CADDY PYRAMID Equipment Support Clamp

Clamp to secure heavy-duty mechanical equipment when creating a custom frame out of strut.

WARNING

Pentair products shall be installed and used only as indicated in Pentair's product instruction sheets and training materials. Instruction sheets are available at erico.pentair.com and from your Pentair customer service representative. Improper installation, misuse, misapplication or other failure to completely follow Pentair's instructions and warnings may cause product malfunction, property damage, serious bodily injury and death and/or void your warranty.

© 2017 Pentair All rights reserved

Pentair, CADDY, CADWELD, CRITEC, ERICO, ERIFLEX, ERITECH and LENTON are owned by Pentair or its global affiliates.

All other trademarks are the property of their respective owners. Pentair reserves the right to change specifications without prior notice.

