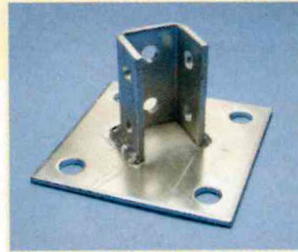
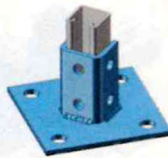


CADDY® ERISTRUT

45° Post Base for Strut Type A

- Post base to create metal frames for attachment to CADDY® ERISTRUT or CADDY® PYRAMID

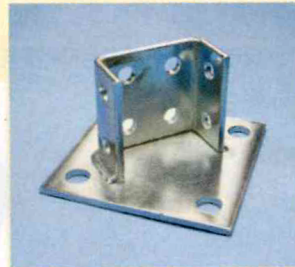


Material: Steel
Finish: Electrogalvanized

Part Number	Description
P110000EG	EG, 6" x 6" x 3 1/2"

45° Post Base for Strut Type AA

- Post base to create metal frames for attachment to CADDY® ERISTRUT or CADDY® PYRAMID



Material: Steel
Finish: Electrogalvanized

Part Number	Description
P130000EG	EG, 6" x 3 1/2"