

USER'S MANUAL

Striker User's Guide for Safe Bending

Striker

Square-to-Round Forming Machine

NAMCOR

5703 Egremont Drive
RR#1 Ilderton, ON N0M 2A0

www.namcor.us · 1-877-NAMCOR5 (626-2675) · info@namcor.com

USER'S MANUAL

TABLE OF CONTENTS

	Page #
1.0 General Information.....	2
1.1 <i>Striker</i> Summary.....	2
2.0 Getting Started.....	3
2.1 Parts to Assemble.....	3
2.2 Parts Description.....	3
2.3 Assembly Diagram and Additional Resources.....	4
3.0 Operation Guide.....	5
3.1 Optimum Operation.....	5
3.2 Safety Guidelines.....	5-6
3.3 NAMCOR's Commitment to Safety.....	7



The LEADING Square-to-Round Former!

1.0 GENERAL INFORMATION

1.1 **Striker** SUMMARY

The **Striker**, square-to-round former, is used for the purpose of producing superior-quality off-set and center-line square-to-rounds.

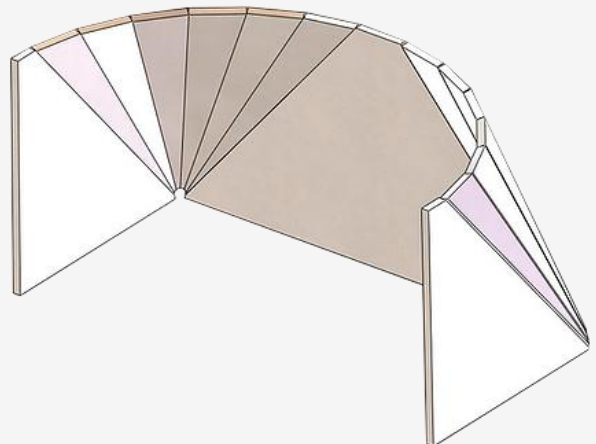
With its sleek, highly functional and ergonomic design, the **Striker** brings shop productivity to a whole new level; producing quality-leading off-set and center-line square-to-rounds in half the time! The **Striker** provides versatility, quick turn around time, convenient shop portability, requires shop-air only (90-120 psi), is fully guarded for your safety, requires limited shop space, is designed for any HVAC shop, and is available in the following sizes to meet all your square-to-round needs:

Striker HD

- 80mm Cylinder
- Capacity up to 16 Gauge and up to 24" in Length

Striker HDX

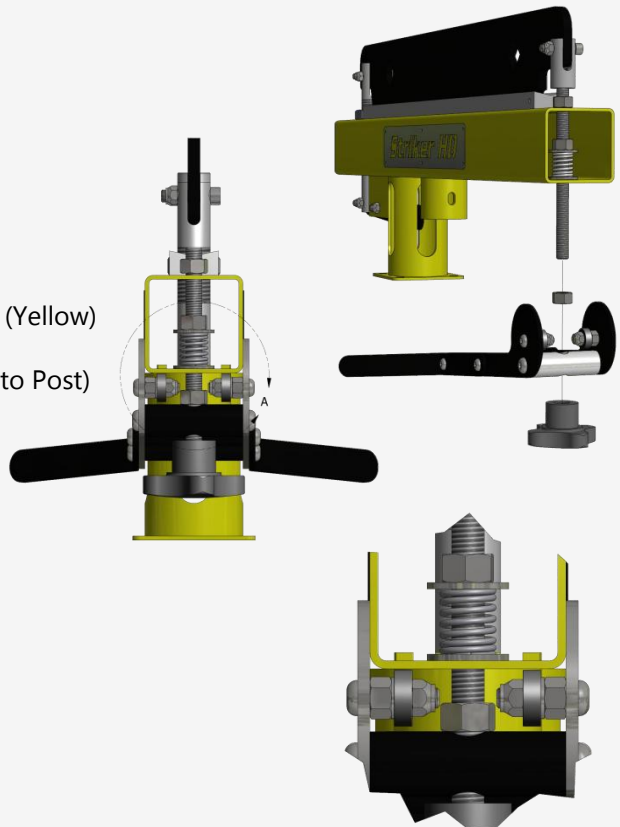
- 100mm Cylinder
- Capacity up to 16 Gauge and up to 30" in Length



2.0 GETTING STARTED

2.1 – PARTS TO ASSEMBLE

QTY	PART
1	16 Gauge Forming Head (Yellow)
1	Forming Blade (Black)
1	Safety Lens (Clear)
1	Air Cylinder C/W 4 1" Bolts & 2 Air Fittings
4	Gussetts (Black)
12	3 1/2" 5/16 Bolts C/W Nylock Nuts
2	Support Feet with Height Adjustment Bolts (Yellow)
1	Up-Right Post (Black)
1	3" 5/16 bolt C/W Nylock Nut (Fasten Head to Post)
1	Foot Pedal (Yellow) C/W Air Fittings
1	Pair of Air Lines (Yellow)
1	In-Air Line for Shop Connection
1	Quick Pivot Release Handle (QPR)

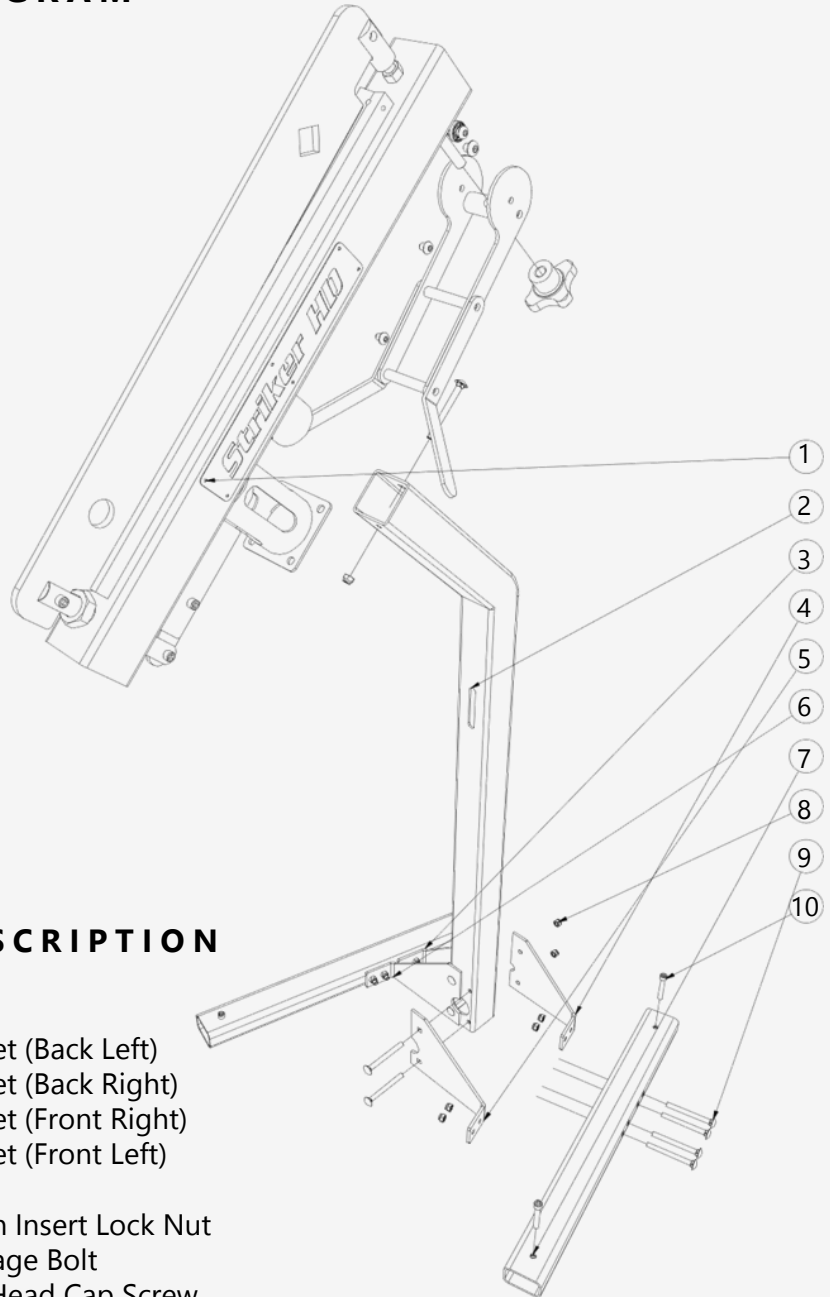


2.2 – PARTS DESCRIPTION

QTY	PART NUMBER	DESCRIPTION
2	628-2Z	BB1_001_101-Deep Groove Ball Bearings, Single Row
3	ANSI B18.2.2 1/2 13	Hex Nuts (Inch Series) Hex Nut
2	ANSI B18.2.2 3/8 16	Hex Nuts (Inch Series) Hex Nut
2	ANSI B18.22.1 1/2 Regular Type B	Plain Washer (Inch)Type A and B
2	ANSI B18.3 3/8 24 3/8	Hexagon Socket Button Head Cap Screw
3	ANSI B18.3 5/16 18 UNC 1 1/2 HS HCS	Hexagon Socket Head Cap Screw
1	ANSI B18.3 5/16 18 UNC 1 1/4 HS HCS	Hexagon Socket Head Cap Screw
2	ANSI B18.3 5/16 18 x 1 1/4	Hexagon Socket Button Head Cap Screw
4	ANSI B18.3 5/16 18 x 3/8	Hexagon Socket Button Head Cap Screw
1	Compress Spring	Compression Spring
6	IFI 100/107 5/16 18	Top Insert Type Nylon Insert Lock Nut
1	K0683.16	K0683 Palm Grips Quick-Acting Grey Cast Iron
1	Latch Assembly	Quick Pivot Release (QPR)
2	SAE J773b 5/16 SAE Type L Narrow	Spring Washer
1	Blade HD or HDX	Blade
1	Striker Arm	Pivot Arm
1	Striker 1 Inch Jam Nut	Plastic Jam Nut
1	Striker Back Blade Clevis	Back Clevis
1	Striker Bottom Blade Threaded Clevis	Front Threaded Clevis
1	Striker Die	Bottom Die
1	Striker Front Blade Threaded Clevis	Front Clevis
1	Striker Half Inch Threaded Rod	Threaded Rod
1	Striker Safety Glass	Glass

2.0 GETTING STARTED

2.3 - ASSEMBLY DIAGRAM



ITEM	QTY	DESCRIPTION
1	1	Head
2	1	Leg
3	1	Gusset (Back Left)
4	1	Gusset (Back Right)
5	1	Gusset (Front Right)
6	1	Gusset (Front Left)
7	2	Foot
8	13	Nylon Insert Lock Nut
9	13	Carriage Bolt
10	4	Hex Head Cap Screw

Please visit NAMCOR's website for additional assembly resources:

www.namcor.us/striker

Striker ASSEMBLY VIDEO

Striker FULL ASSEMBLY INSTRUCTABLE VIDEO

3.0 OPERATION GUIDE

3.1 – OPTIMUM OPERATION

For optimum performance, please follow instructions carefully, and refer to additional resources available, to ensure your **Striker** machine is operating correctly.

For NAMCOR's step-by-step **Striker OPERATION VIDEO**, please visit www.namcor.us/striker

For additional **Striker** assistance, email info@namcor.us, phone **1-877-NAMCOR5 (626-2675)**, or chat with a live representative on NAMCOR's website www.namcor.us

3.2 SAFETY GUIDELINES

Be sure to watch NAMCOR's **Striker ASSEMBLY VIDEO** before attempting the implementation of this equipment (www.namcor.us/striker).

Make sure all pneumatic connections are secure and have no leaks.

Ensure all bolts are used and are used according to the **Striker ASSEMBLY VIDEO**.

Safety glass on forming blade is **not to be removed** as this is the major pinch point. (The **Striker** blade is encased with a safety glass to ensure fingers are kept away from pinch point).

CAUTION: Do not over tighten QPR handle (this can result in crushed bearings and broken adjustment handle).

Stand straight looking into the top of the blade (the **Striker's** unique design alleviates operating bent over).

The **Striker** is ergonomically designed for workers comfort when forming square-to-rounds.

Be sure to use safe practices when operating any equipment in your shop!



3.0 OPERATION GUIDE

3.2 – SAFETY GUIDELINES (CON'T)

WHY THE *Striker* IS ERGONOMICALLY SOUND...

POSTURE! POSTURE! POSTURE!

The *Striker's* sleek, highly functional and ergonomic design was crafted with the operator's health and safety in mind! With ease, operators can produce quality-leading square-to-rounds in less time, with less labor, all while manufacturing in a safe and comfortable position.

Here are some key safety factors the *Striker* machine addresses:

FATIGUE:

Exhaustion, while operating machinery, will obstruct the operator's ability to attentively focus on job performance. The *Striker* was designed to help eliminate fatigue caused by poor posture, repetitive motions, and over compensated support used on one leg.

BACK PAIN:

Upper and lower back pain develops during the course of day-to-day life, generally from repetitive activities. The *Striker* was designed to relieve that stress, by enabling the operator to work in a straight posture, instead of bending over.

"Bend Metal, Not Your Back!"

VISUAL AWARENESS:

The design allows operators to stand straight, with their head up, to provide a heightened awareness of what is going on around them in a busy shop environment.

PHYSICAL STRESS:

The *Striker's* narrow shape was designed to put less stress on arms, by reducing the amount of up/down and over-reaching motions.

3.0 OPERATION GUIDE

3.3 NAMCOR'S COMMITMENT TO SAFETY:

NAMCOR strives to look at all key factors when developing its machinery to ensure quality, efficiency and profitability. Like most companies, this is what we all endeavour; however, one major factor is often missed or overlooked...and that is **ERGONOMICS!**

Which poses the question, "*Do manufacturers think enough about the needs and risks of their customers?*"

NAMCOR is proudly dedicated to fabricating top-quality machinery with our customers' health at the forefront; investing significant time in designing machinery that considers all human-factors, with thorough usability testing, to ensure the health and well-being of its operators.

"When it comes to our customers' safety, there are no cutting corners!"



5 7 0 3 E g r e m o n t D r i v e
R R # 1 I l d e r t o n , O N N 0 M 2 A 0

www.namcor.us · 1-877-NAMCOR5 (626-2675) · info@namcor.com