



MetalHead Support System

MetalHead is GreenLink Engineering's latest patent-pending, innovative support system, designed to significantly outperform reclaimed rubber-based, block-type support products. Made in the U.S.A.

Lightweight, economical
and extremely durable

Modular -attachable
connectors, rollers,
clamps and inserts

Single extruded unit features
channel head compatible
with standard strut products

Standard 9 1/2"
length but custom
lengths up to 48"
are available

100% Recyclable

Anodized aluminum
100 mil walls

Withstands 10,000 lb.
vertical compression

Resistant to oxidation, salt spray
and mild acids

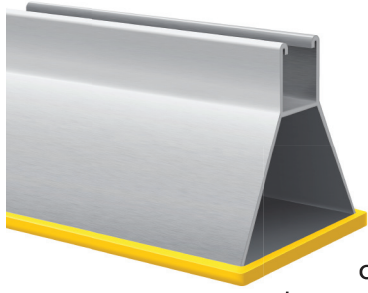
20-year material warranty

Integrated urethane pad
protects roof membrane

GREEN LINK
ECO-ENGINEERING
Contractor Driven!

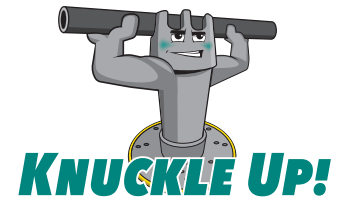
269.216.9229 | 888.672.9897 | www.greenlinkengineering.com
5519 East Cork Street, Kalamazoo, MI 49048 USA





MetalHead

Support System



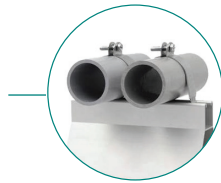
MetalHead is an extremely strong and durable support system for pipes, cable trays, ductwork, walkways and HVAC/R equipment. The aluminum extrusion design provides a sturdy triangular base with the strut channel incorporated, which allows attachment of all standard strut hardware. MetalHead features 100-mil aluminum walls, which allow the base to support 10,000 lb. vertical compression over a 50 sq.in. footprint. Its hard, anodized surface is resistant to oxidation, salt spray and mild acids found in ponding water. The MetalHead support includes a yellow molded urethane pad to protect vulnerable membrane substrates from abrasion or metallic point-loading. The durability of this product allows Green Link to offer a twenty-year (material only) warranty. MetalHead supports contain no toxic or carcinogenic material. They can be reused or completely recycled. **MADE IN THE U.S.A. - PATENT PENDING.**

Note: Uniform load capacity is only for this component and this assembly. Please consult an engineer or roofing manufacturer for the load capacity.

MetalHead is Modular

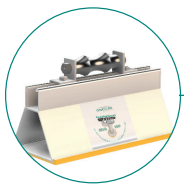
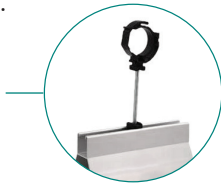
By itself, MetalHead provides a durable, strong support for pipes and other equipment, but it has been designed with modular features. A range of attachments allow for MetalHead to meet a variety of support needs.

Standard strut-compatible metal clamps can be used to secure two 3" diameter pipes.



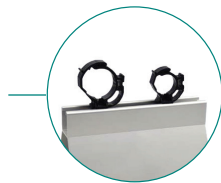
A molded polyurethane insert is engineered to slide into the channel top for securing up to seven .850" O.D. pipes. The insert fastens to the head with standard bolts.

A single pipe clamp allows for elevated installation of pipes.



Roller supports for pipelines are also available.

Clamps slide into the strut top of the MetalHead for securing pipes of varying diameters.



In this configuration, a section of channel is elevated by threaded steel rods, which attach into a threaded urethane block insert that slides into the MetalHead channel. This configuration elevates pipes up to 18" off the roof surface.

Head-to-Head Comparison

	METALHEAD SUPPORTS	"CRUMB" RUBBER-BASED BLOCK-TYPE SUPPORTS
Support strength	10,000 lbs.	400-460 lbs.
Weight	2 pounds	4.5 pounds
Recyclability	100%	Partial
Weathering, freeze thaw cycles	Excellent	"Crumb" rubber degrades from exposure
Composition	Anodized aluminum	Recycled "crumb" rubber with attached channel
Chemical resistance	Impervious	"Crumb" rubber degrades from exposure
Dimensions - length	9 1/2" (L) 5" (H)	9 1/2"-10 1/2" (L) 5" (H)
Material warranty	20 years	Variable - 30 days to 10 years
Structure	Single extruded unit including channel	Two elements - channel is attached

GREEN LINK
ECO-ENGINEERING
Contractor Driven!

5519 East Cork Street,
Kalamazoo, MI 49048 USA
269.216.9229 | 888.672.9897
www.greenlinkengineering.com