



BACKDRAFT DAMPER



MODELS:
LBD-1
LBDF-1 (with Rear Flange)

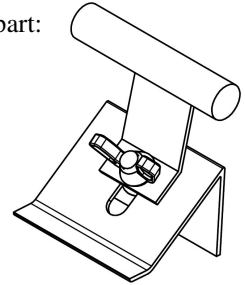
APPLICATION

The LBD-1 vertical/horizontal mounted Backdraft Damper that is designed to allow vertical/horizontal airflow and prevent reverse airflow. The damper is opened by air pressure differential and closed by gravity.

OPTIONAL BLADE COUNTERWEIGHTS:
Counterweights available on request

Note: Dampers will be provided less counterweights unless specified.

Optional part:



STANDARD CONSTRUCTION

- FRAME:** 6063T5 Extruded aluminum
Minimum wall thickness 16 Ga.
- BLADES TYPE:** 6063T5 Extruded aluminum 16 Ga.
counter balance rod holder
Built into rear of blades
- SEALS:** Vinyl blade
- AXLES:** Cast aluminum
- LINKAGE:** 16 Ga. x 5/8" wide aluminum
Concealed in the channel frame
- ORIENTATION:** Horizontal or vertical
- FINISH:** Mill finish

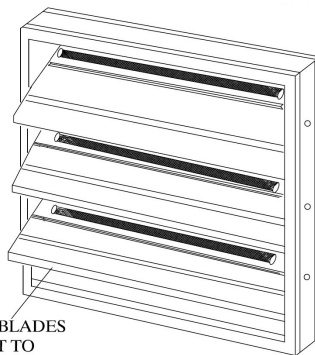
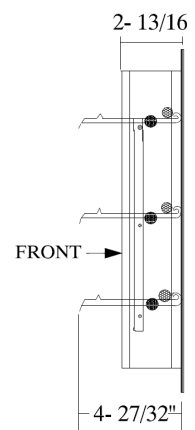
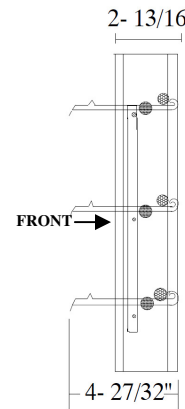
MODEL AND MOUNTING SELECTION

MODEL: LBD-1

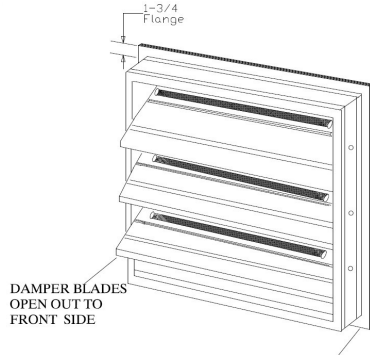
- Vertical Installation
- Flangeless Duct Mounting

MODEL: LBDF-1

- Vertical Installation
- Flange Mount



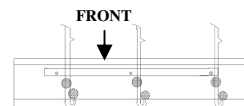
MODEL: LBD-1



MODEL: LBDF-1

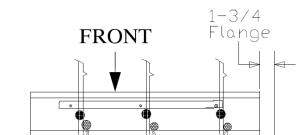
MODEL: LBD-1

- Horizontal Installation with Upward Airflow



MODEL: LBDF-1

- Horizontal Installation with Upward Airflow



NOTE:

When used in fan discharge applications, damper should be at least half the fan diameter distance from fan discharge.

Damper is 1/4" less than ordered dimensions unless specified "ACTUAL SIZE".

Single Section		Multiple Section
Minimum Size (WxH)	Maximum	Maximum Size
6"x6"	36"x60"	UNLIMITED

231 Commerce Dr. Montgomeryville, PA 18936
Tel: 215-412-4445 Fax: 215-412-4409
Email: lloydind@firedamper.com

138 Industrial Loop West, Orange Park, FL 32073
Tel: 904-541-1655 Fax: 904-541-1657
Email: lloydind1@firedamper.com

B1, 4/F., Luen Ming Hing Factory Building
36 Mok Cheong St.,
To Kwa Wan, Kowloon, H. K.
Tel: 852-2760-4188 Fax: 852-2760-4177
Email: tatanlexyim@lloydasia.com



Website: www.firedamper.com