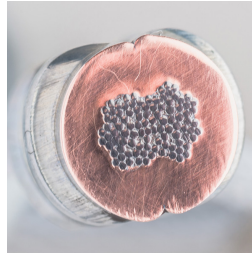


# Oval Sleeve



- Creates secure loop ends
- Swage with swaging tools

Part Number	Brace Size
Material: Copper – Finish: Electrogalvanized	
CSB12SLVB	#12
CSB18SLVB	#18
CSB36SLVB	#36
Material: Stainless Steel 316 [EN 1.4401]	
CSB12SLVBSS	#12
CSB18SLVBSS	#18
CSB36SLVBSS	#36

Two side-by-side swages required on #12 and #18 cable. Three side-by-side swages required on #36 and #48 cable.  
Check swage with gauge (not included).

## WARNING

nVent products shall be installed and used only as indicated in nVent's product instruction sheets and training materials. Instruction sheets are available at [www.erico.com](http://www.erico.com) and from your nVent customer service representative. Improper installation, misuse, misapplication or other failure to completely follow nVent's instructions and warnings may cause product malfunction, property damage, serious bodily injury and death and/or void your warranty.

© 2021 nVent All rights reserved

nVent, nVent CADDY, nVent ERICO, nVent ERIFLEX and nVent LENTON are owned by nVent or its global affiliates.

All other trademarks are the property of their respective owners. nVent reserves the right to change specifications without prior notice.