

# Where superior duct work begins.

VICON is the industry leader for complete automation of the duct fabrication process.

VICON offers patented features and innovative solutions to meet your manufacturing needs.

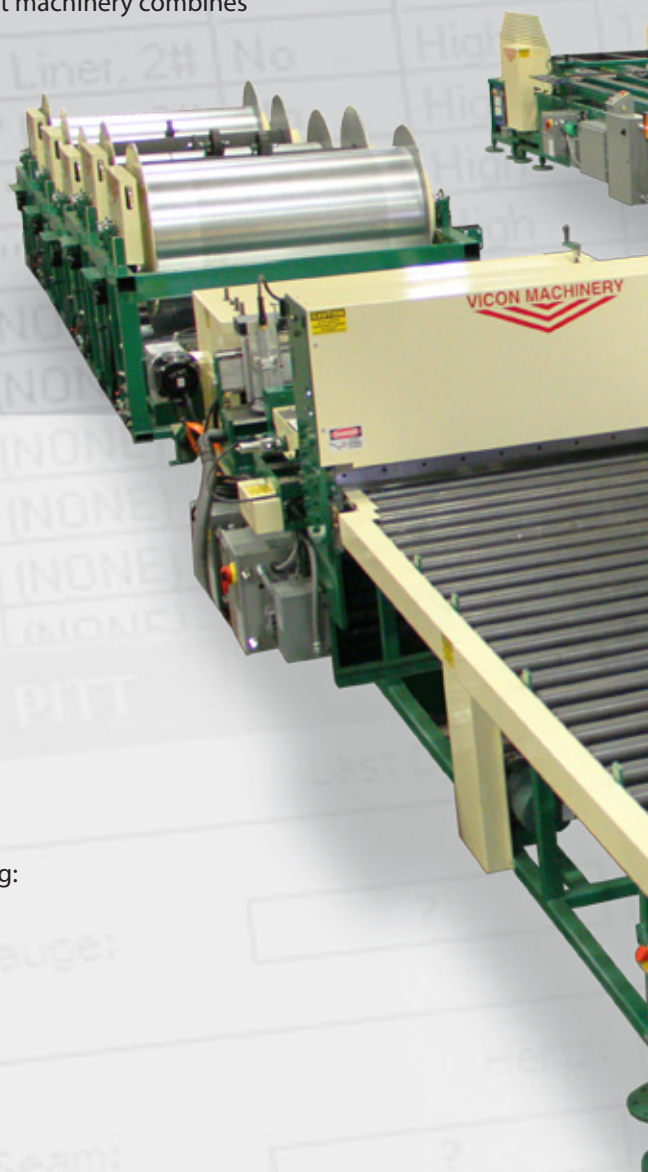
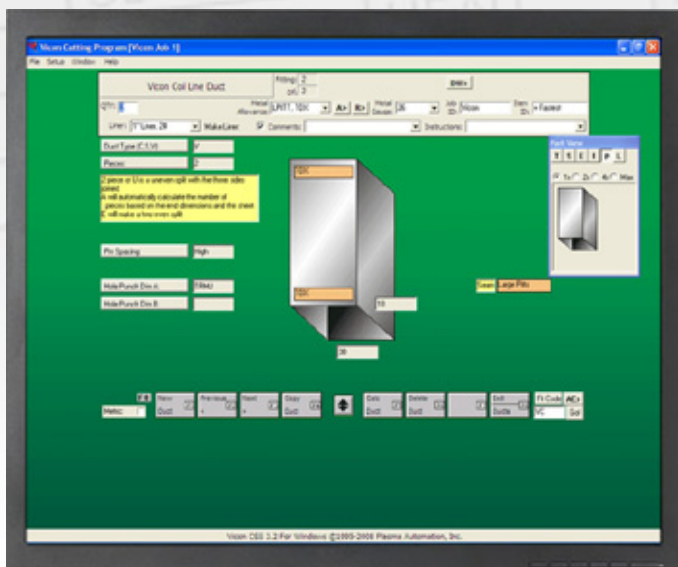
100% designed, manufactured and supported in the U.S.A., the state-of-the-art machinery combines accuracy and speed, while reducing manufacturing cost and material waste.



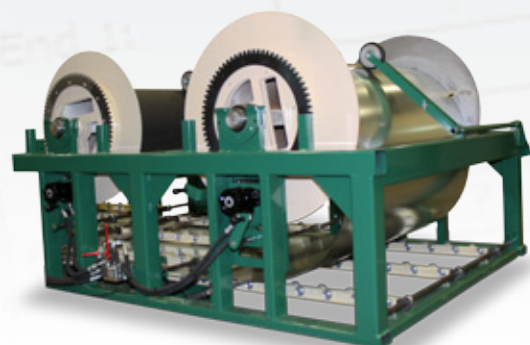
## State-of-the-Art PC Controller

VICON's PC controller and software for maximum speed and versatility in the processing of jobs. The result is a greatly increased production flow.

- User-friendly, Customizable "Duct Entry Screen" improving operator efficiency
- Ability to merge multiple jobs further enhancing "Duct Sorting"
- Increased productivity with optional Office Programming System
- Complete communication integration with other VICON systems including: Plasma cutting, Liner cutting, Bar-coding, Job Costing software, etc.
- VICON Coil Line Software for Windows® is: Menu Driven and can be set to SMACNA standards or customized to your shop standards
- Capable of importing from various types of CAD design software



**Coil Spool Assembly**  
US Patent #7,673,915



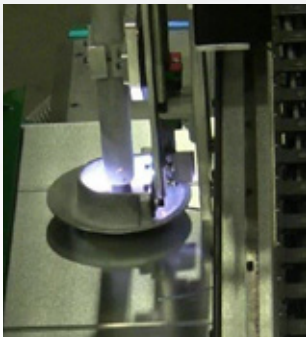




**Optional Four Position Insulation Holder**  
US Patent #7,926,757

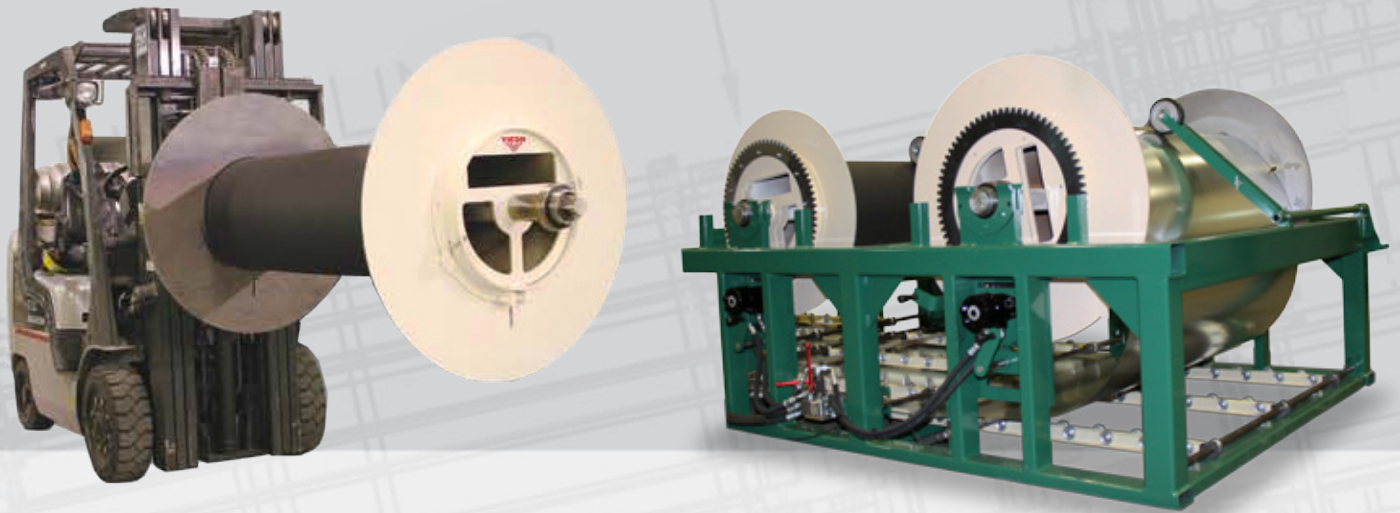
**Heavy Duty Liner Shearing**  
US Patent #9,981,399 B2

**Optional Coil Line Plasma Cutting**  
US Patent #9,393,638 & #9,731,376



# VICON Coil Handling System

## Model 5XC-G



The VICON Coil Cradle System is the fastest and easiest coil loading process in the industry. Coils are spooled on VICON's patented Coil Drum Assemblies (US Patent #7,673,915). The coil spool is easily inserted into the coil material with the use of a forklift in a matter of minutes. Coils are then loaded into the coil cradles with the use of a forklift or crane. The entire process can be completed by a single individual.

Coil Cradles are designed with individual hydraulic coil drive motors. Pneumatic "backup" wheels are located at each coil station to ensure positive feed and safe band removal on new coils. Underfed roller track guiding system provided to guide the end of each coil up to the infeed guide ramp on the duct blanking system.

### Benefits

- Individual hydraulic coil drive motors at each station for extremely smooth and quiet material feed
- Each drive motor is retractable for safe material loading
- Automatic forward and reverse drive capability with slack loop sensing system
- Forklift and Crane loading capability

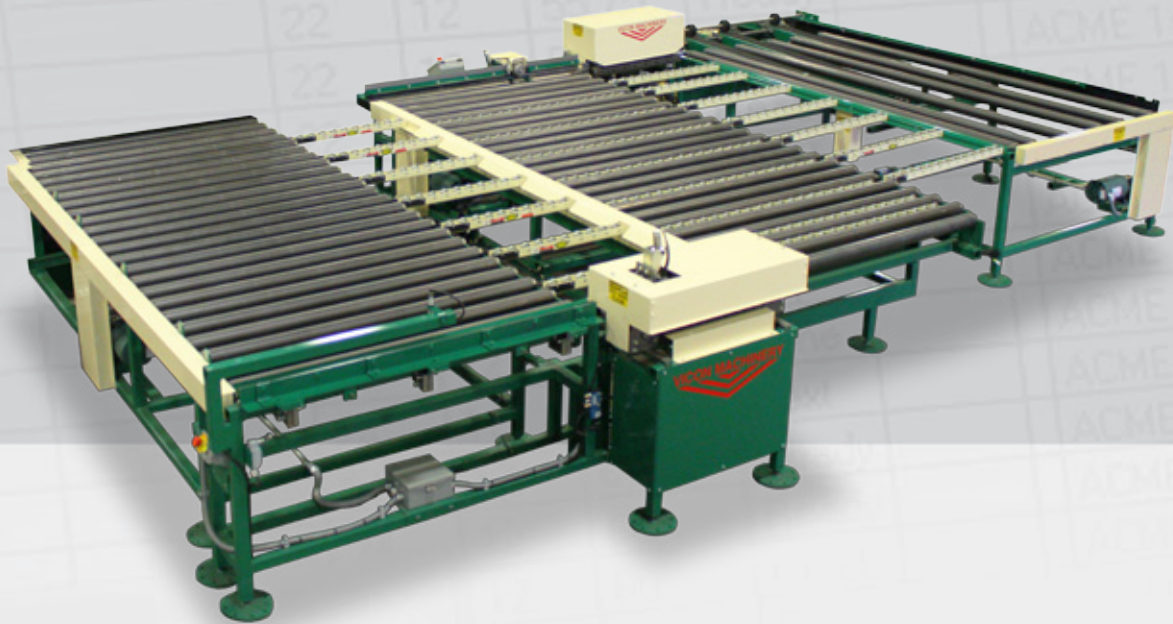
### standard specifications

- \* Number of Stations: 1 - 6
- \* Maximum Coil Weight: 12,000 lbs per station
- \* Maximum Coil Width: 60"
- \* Maximum Coil O.D.: 42"
- Coil I.D.: 20"
- \* Optional capacities available upon request



# VICON Lockseam System and Transfer / Feed Conveyor System

Model V-510-LS and Model V-510-90



The **Superior Design** of the VICON Lockseam System is the most user-friendly and reliable system for automatically forming Pittsburgh and Snap-Lock seams. VICON's "Accessible Concept" creates a system free of overhead devices, eliminating any possibility of miss-feeds or jams. The "open top" allows feeding of oversize blanks to the TDX, liner and brake systems.

## Benefits

- Forms Pittsburgh and Snaplock seams automatically
- Female and male seams formed independently eliminating tapered edges and duct "twist" allowing the fastest production rate in the industry
- Large heavy duty bearings with inner races and grease fittings protect rollformers and extend the life of the machines
- Chain driven, heavy duty roller transfer conveyors
- Positive roll form feed system to ensure square formation
- Quick changeover on female lock through the use of a rotating rollformer frame
- Automatic quick set for button punch on male edge
- Material removal bypass feature allows for blank removal of sheets to be plasma cut or used for other operations

## standard specifications

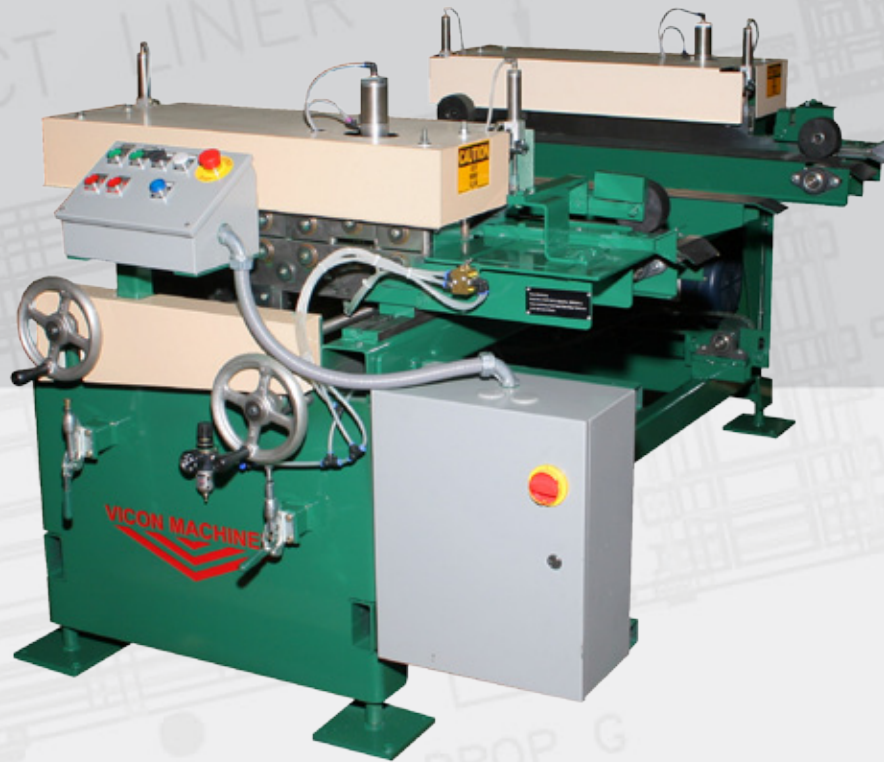
- Heavy duty roll form heads
- 120" maximum and 14" minimum duct stretch-out
- 138" maximum material stretch-out on 4 piece duct
- 18-26 gauge mild steel capacity for Pittsburgh
- 20-28 gauge mild steel capacity for Snaplock
- Lighter and heavier capacities available upon request

## Options

- Dual head system designed to minimize footprint and maximize productivity when shop floor space is limited
- Automatic duct seam sealant system
- Industrial hard chrome plated rollform tooling
- Extended length transfer system for additional duct stretch-out

# VICON Dual Head Cleat Edge Former

Model V-CEF-DH-5



The VICON Dual Head Cleat Edge Former rollforms a 7/16" cleat edge on both ends of the duct after the Male and Female lockseam has been rollformed.

## Benefits

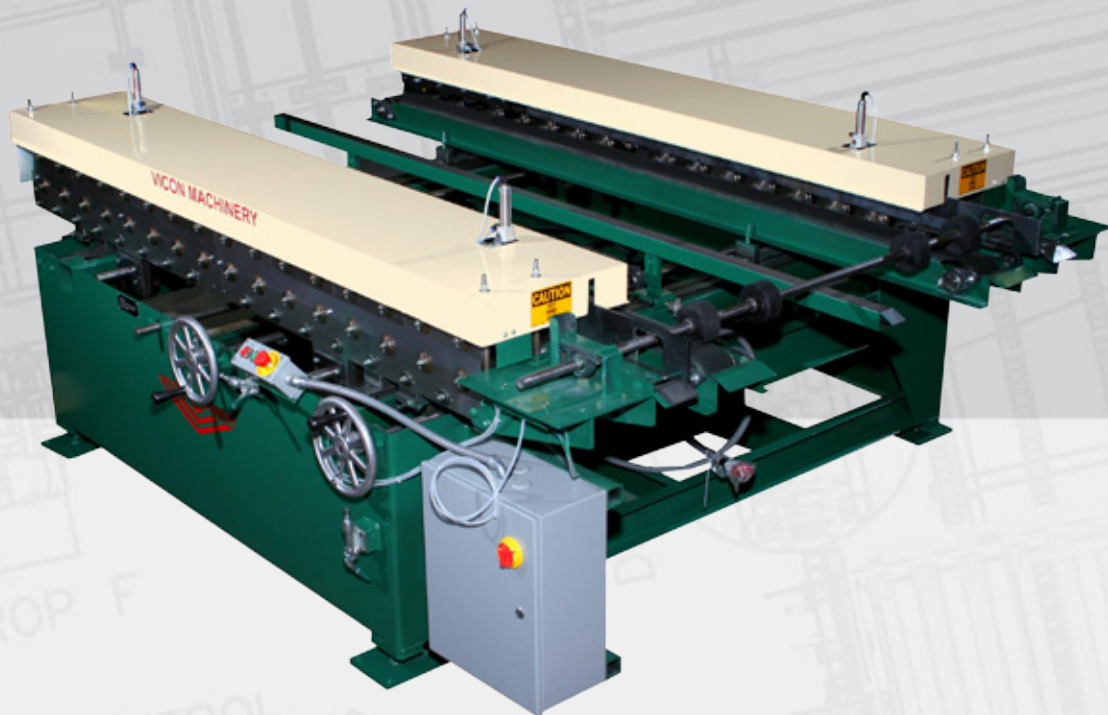
- Cleats can be formed on either the short or long leg of L-section or full wrap duct
- Reliable, quiet performance
- Accurate positioning with precision ball screws
- Large heavy duty bearings with inner races and grease fittings protect rollformer and extend the life of the machine
- Pneumatically operated bypass guides with wedge-grip conveyors allow blanks to be fed through for other types of duct connections

## standard specifications

- 18–26 gauge mild steel capacity with no adjustments required
- 7/16" cleat edge with minimum cleat length of 4"
- 3 HP motor coupled to a heavy duty oil bath gear reducer
- 8 Station heavy duty conventional roll form heads
- Heavy duty roller chain drive (no belts)
- Robust 1" diameter stress proof roller spindles

# VICON Dual Head TDX Rollformer

## Model V-TDX-DH-5



The VICON TDX Dual Head Rollformer is designed to produce your preference of either T-25a or T-25b SMACNA approved transverse flange connector.

### Benefits

- Reliable, quiet, long life performance
- Superior quality with 16 forming stations on each roll form head
- Precision ball screws for parallelism and quick change over
- Large heavy duty bearings with inner races and grease fittings protect roll spindles and extend the life of the machine
- Pneumatically operated bypass guides with wedge-grip conveyors allow blanks to be fed through for other types of duct connections

### standard specifications

- 18-26 gauge mild steel capacity with no adjustments required when changing metal thickness
- 10 HP motor coupled to a heavy duty oil bath gear reducer
- Heavy duty roller chain drive (no belts)
- Rugged 1-1/4" diameter stress proof roller spindles
- 16 gauge mild steel capacity available upon request

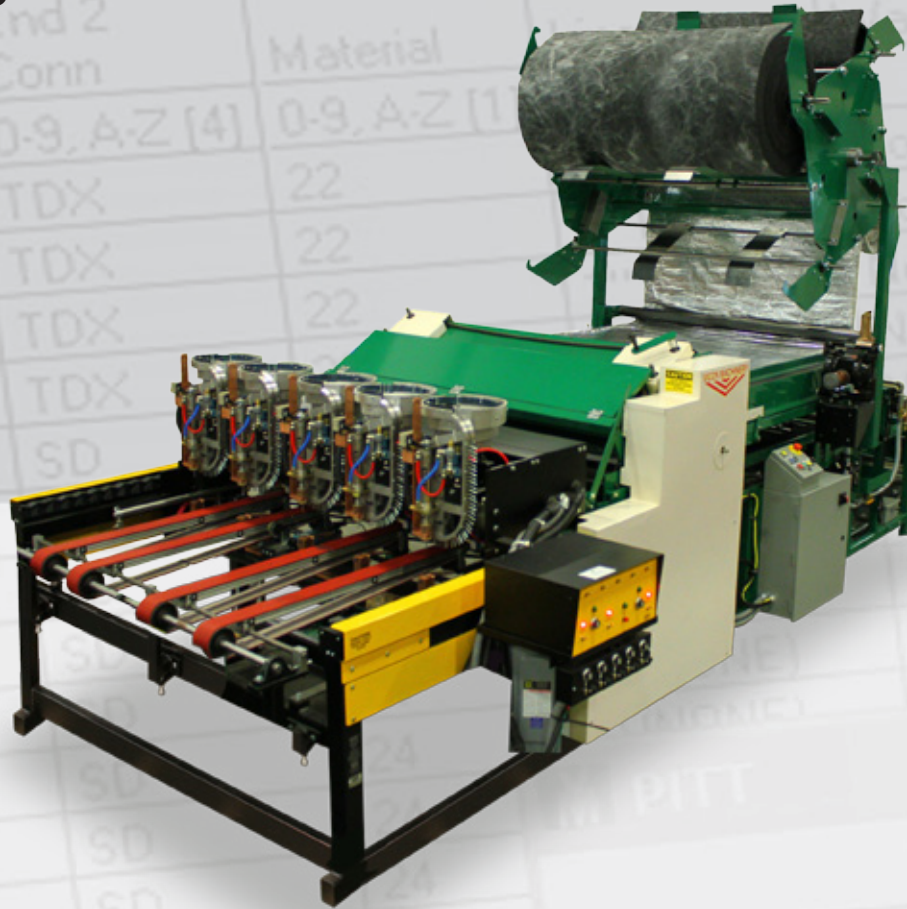
### Options

- "Grease duct, Welded duct" option available to produce right angle flange
- Industrial hard chrome plated rollform tooling



# VICON Automatic Duct Liner Application System

## Model V-510-DD



The VICON Automatic Duct Liner Application System uncoils and shears the duct liner, applies liner adhesive to the sheet metal and automatically locates and pins the liner to the sheet metal. No tooling or blade changes required on shearing process.

### Benefits

- Heavy duty patented liner shearing, capable of processing all types of liner material designed for use in coil line duct fabrication. No tooling or blade changes required. (US Patent #9,981,399 B2)
- Safe push button control allows fast, safe and easy threading and crop cutting of new insulation rolls
- Rows of pins spaced to SMACNA standard for low and high velocity air flows. Pin placement can be customized via the control system
- Unit automatically controlled by the VICON Control System
- Easy, open access to glue heads for cleaning
- Industry leading guiding system, no adjustments required

### standard specifications

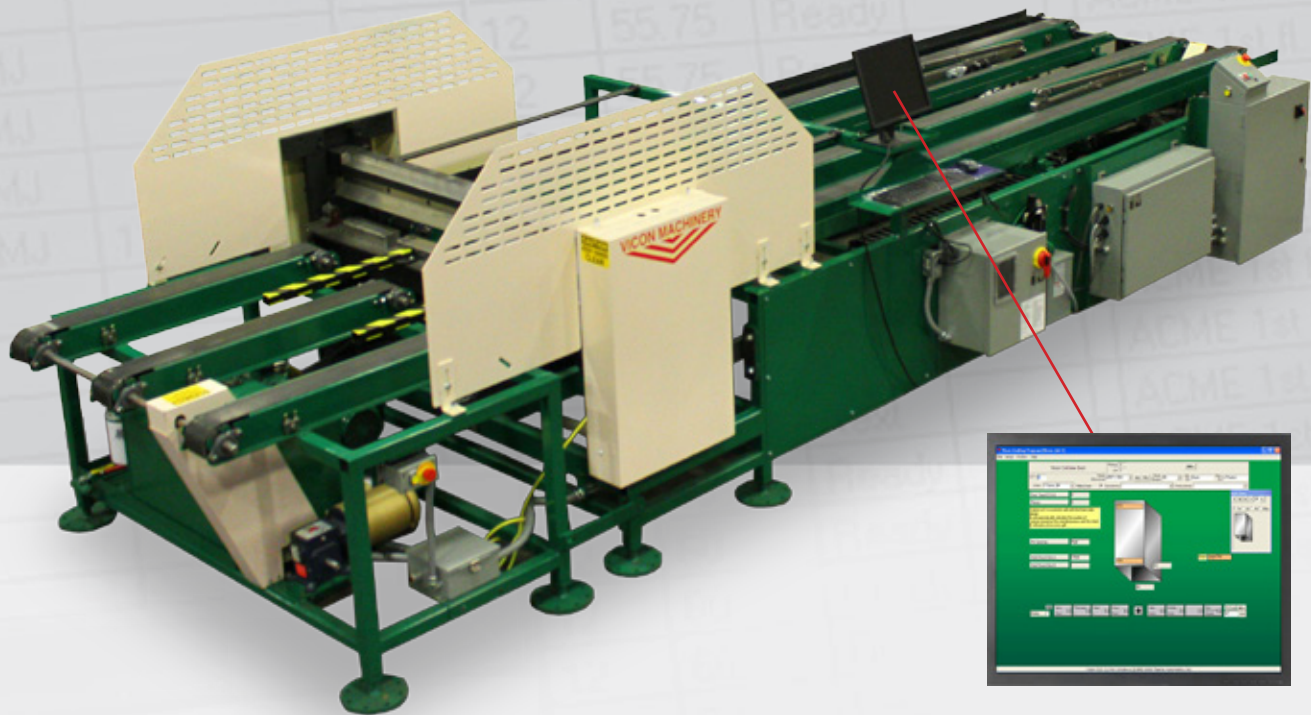
- Automatic adhesive extrusion application system
- Multi-speed drive for optimum pinning speed or bypass of unlined duct
- Designed to apply 44", 47", 48", 56", 59" and 60" wide liner
- Low profile liner cradle/uncoiler
- Multi-head pin spotter: choice of Duro Dyne® or Gripnail®

### Options

- Patented Four (4) position insulation coil holder to allow for rapid change of insulation sizes US Patent #7,926,757)
- High Speed Multi-head pin spotter

# VICON Full Wrap Automatic Brake System

Model V-516B-FW



The VICON Full Wrap Automatic Brake System is a heavy duty high speed servo feed bending system.

## Benefits

- High production front gauge gripper/ejector system with dual rack and pinion servo-drive ensuring squareness and accuracy
- Reliable "Time Based Logic" eliminates need of adjustments to external sensors
- Remote Coil Line Operator Control station
- Industry leading guiding system, no adjustments required

## standard specifications

- Heavy duty 5' hydraulic bending unit with 16-26 gauge mild steel capacity
- System capable of L-section, U-section or full wrap duct (min. size for full wrap is 6" x 6" unlined), maximum capacity 120" wrap perimeter
- 48" and 60" duct lengths for slip & drive/ raw duct and 44" and 56" duct lengths for TDX duct
- Unit automatically controlled by VICON Control System

## Options

- L-Brake system also available
- 14 gauge mild steel capacity