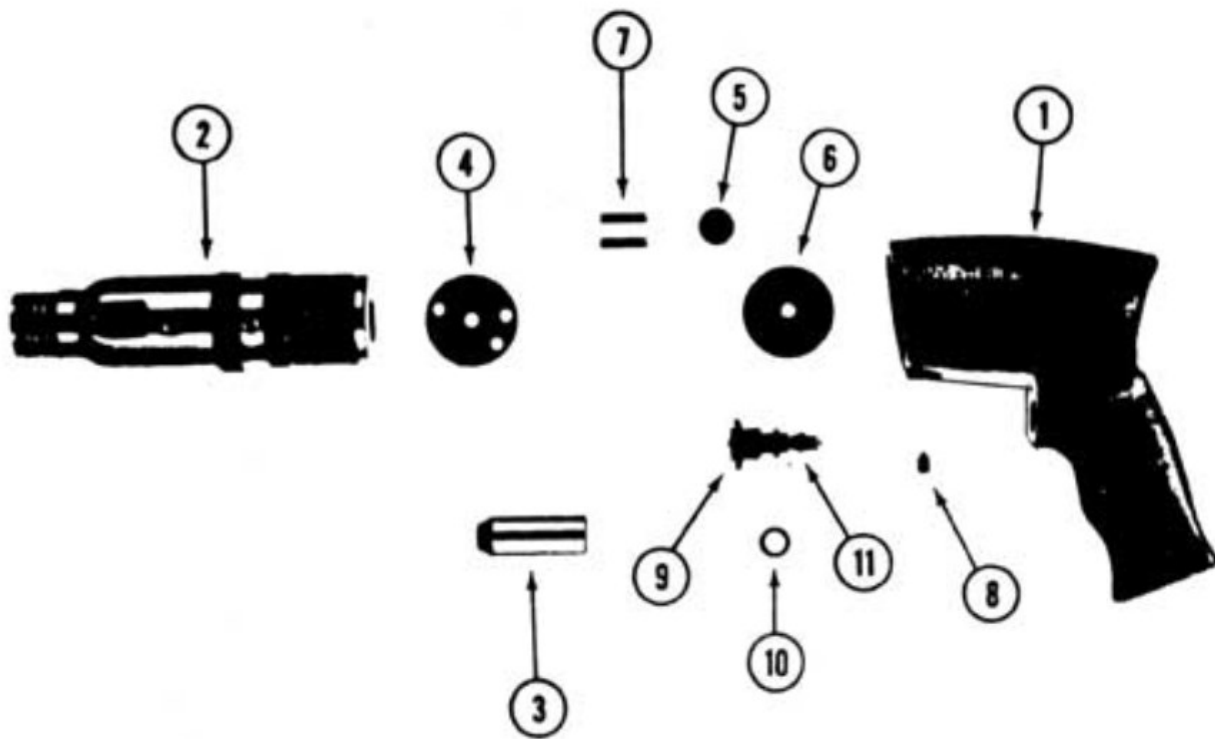


Breakdown Sheet

Pistol Grip

Model 240476 Pittsburgh Lock Seam Instructions & Parts



Item	Part Number	Description
1	240100	Pistol Handle
2	240202	Barrel
3	240600	Piston
4	240301	Front Valve Block
5	241800	Wafer
6	240501	Back Valve Block
7	240700	Pin (2 req.)
8	240800	Socket Set Screw
9	90500	Trigger Assembly
10	91300	Large Rubber Seal
11	91301	Small Rubber Seal

Lubrication

Before using a new tool, pour a small amount of oil into the air inlet, connect the hose, and run the tool momentarily to distribute the oil into all of the working parts. The best oil to use is Superior Pneumatic Oil, but if Superior Pneumatic Oil is not available, do not use oil heavier than SAE #10. Thereafter, insert several drops of oil into the air inlet after every two or three hours of operation. If the unit is in constant use, it must be equipped with an airline lubricator and filter.

Operation

Always wear safety goggles and protective clothing when in operation. The force and speed of the hammer blows can be regulated by the depression of the trigger. Light pressure on the trigger will start the hammer blowing at a slow rate. Full power is reached when the trigger is fully depressed. Maximum efficiency is reached when operated on 90 PSI at 4 CFM.

Caution

1. Never operate air hammers without a chisel or a chisel that is not securely against work.
2. Disconnect the air supply before disassembly.
3. The barrel must be kept tight at all times. A loose barrel will cause the stripping of threads in the handle and loss of power.
4. Connect the hose whip directly to the inlet bushing to eliminate operator fatigue and facilitate the maneuverability of the tool.

Disassembly

1. Clamp the barrel in the vise on the flats provided and loosen the set screw in the handle.
2. Unscrew the handle from the barrel, and with the barrel pointing down, lift the handle off the barrel.
3. Lift the rear valve block, wafer, and front valve block with pins, off the barrel.
4. Unscrew the trigger assembly counterclockwise.

Note: Any tools needing major work should be taken to a factory or authorized repair station.

Assembly

1. Thoroughly clean and inspect all parts for obstructions.

Note: Replace trigger washers with new washers.

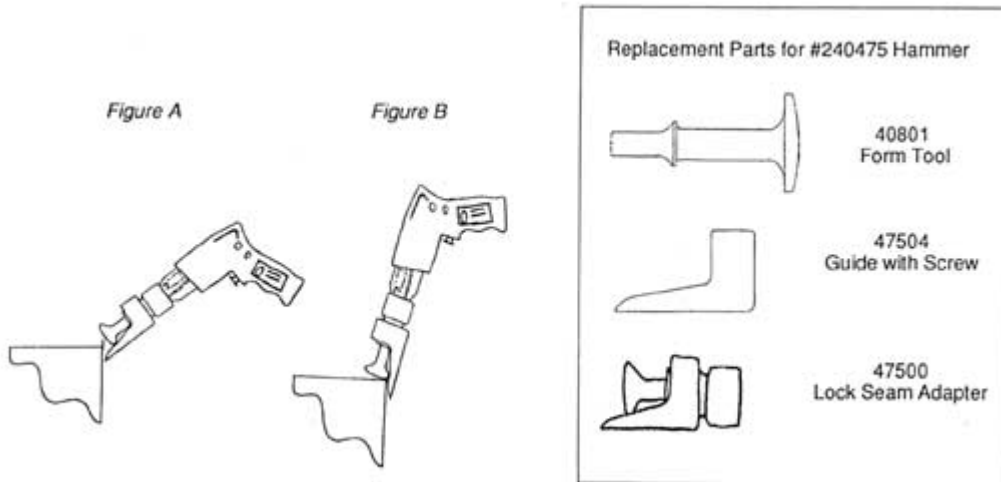
2. Screw the trigger assembly back into the handle and tighten it.
3. While holding the barrel down, install pins.
4. Place the front valve block on the pins with milled face-up.
5. Install the wafer in the rear valve block.
6. Place the rear valve block on the pins with milled face-down.
7. Screw the barrel into the handle and tighten.
8. Tighten the socket set screw.

Ordering Parts

When ordering parts, the part number, serial number, and model number must be designated.

Model 47500 Lock Seam Adapter

Instructions & Parts



Instructions

1. Connect the hammer to an air source of 90-100 psi.
2. Place the hammer guide on the Pittsburgh lip as shown in *Figure A*.
3. Feather the trigger to check the hammering action and continue to feather as power is needed to bend the seam.
4. Move the hammer smoothly along the length of the seam at an angle of at least 45 degrees.
5. Reposition the hammer as shown in *Figure B* and make a second pass along the seam to close it.

Notes:

- Always use eye and ear protection.
- To ensure proper tool life, keep the form tool firmly against the work surface and do not let the tool run loose and continue to bounce off the surface.
- Some seams may close after one pass.
- To smooth out bends in sheet metal, the aluminum guide can be removed with the forming tool left in.